

day | night | all the light



a day in the life

HomeWorks® | total home lighting control system

Sivoia QED™ | electronic shade and drapery control



# Nature has its own

way of regulating the light in a subtle, ever-changing play of brilliance and shade that helps to define our day, our tasks, and the way that we feel. The same idea is at work with a HomeWorks total home lighting control system. Lutron has designed it to bring all the light that surrounds you conveniently under your control, to make your life more productive, more relaxed, more secure, more efficient, more dramatic: simply more fulfilling.

*This is the story of an average day* and how HomeWorks® and Sivoia QED™ can enhance every room and every hour of the day by controlling daylight, electric light, privacy, and security at the touch of a button. Only one company can provide the expertise, technology, and attention to detail to seamlessly integrate the control of all your light. [Lutron](#).



**The HomeWorks system, once reserved only for new homes, can now be part of any primary residence, luxury apartment, vacation home, or even yacht.**

Technological advancements open the possibility for installations in older and historic homes as well as simple add-ons to existing homes or renovations.

These advancements offer an unprecedented level of convenience and simplicity of installation, revolutionizing the notion of total home lighting control systems.

Begin the day with us...

# HomeWorks® | Sivoia QED™ | contents

## morning

- 5:45 | Before you're awake
- 6:30 | Let the morning greet you
- 6:55 | Open your shades
- 7:17 | Protect your furnishings
- 7:55 | In control while you're away

## evening

- 6:28 | Secure when you return
- 6:51 | Function and flexibility
- 7:49 | Add elegance, style, and simplicity
- 8:00 | Dinner is served

## night

- 9:15 | Entertain with style
- 10:01 | Relax
- 11:32 | Rest assured

## the Lutron difference

engineering | quality | service | 24/7

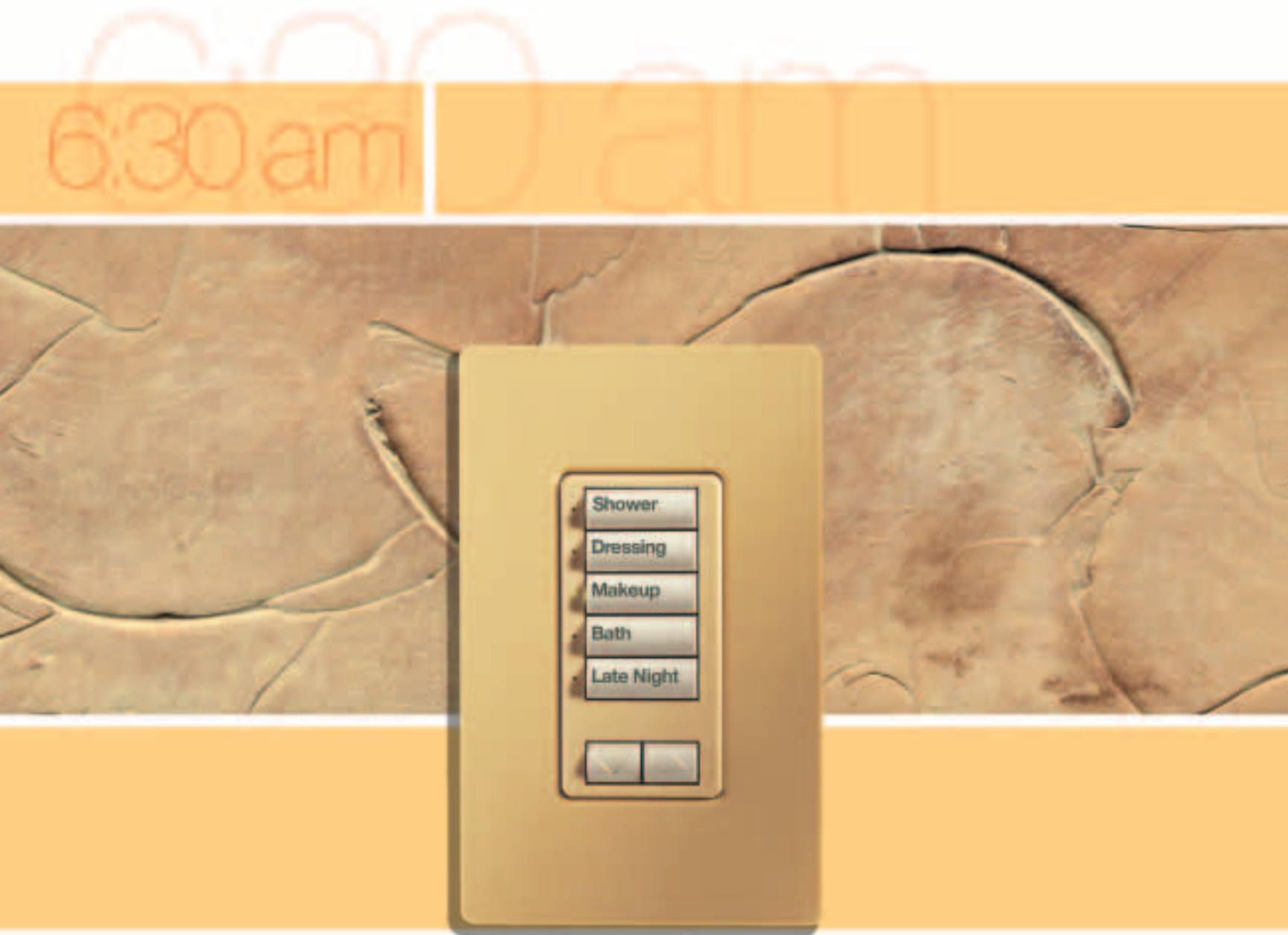


Before you're awake, HomeWorks is already at work. Although sunrise changes daily, the system knows. As the sun comes up, the outside lights are fading off while a pathway of light to the bathroom is gradually appearing.



Before you're awake, HomeWorks is controlling the light.

You're in complete control in the mornings. Perhaps you're the kind of person who must have the lights soft. Then, after your shower, you're ready for a brighter environment. Whether you like the lights soft or bright — it's all in your control.



This seeTouch™ illuminated control is one of many Lutron keypad options you will see throughout this brochure. Lutron offers a variety of colors and finishes, and most are available with custom engraving for your personal lighting control choices.



Let the morning light greet you softly, slowly.



Imagine that everywhere there is a light, you have the ability to control it, precisely and elegantly — on, off, or anywhere in between. Think about how you use your light during the day. You may prefer the light softer in the morning and brighter for tasks such as putting on makeup or choosing your wardrobe.

There are infinite variations of light levels to set a mood, to guide you from one place to another, to add a highlight or low light to any part of your day. A HomeWorks® owner will tell you that once you've experienced total home lighting control, you'll never again settle for the limitations of on and off.

The bright, beautiful sunshine is begging to come in, but only when you're ready. Raise and lower all your shades effortlessly. Just touch a button.

Check your e-mail without the glare.  
Open your shades at the touch of a button.



You don't need noise when you're trying to concentrate. Lutron's full line of Sivoia Quiet Electronic Drive window treatments can raise and lower quietly — almost silently. Sivoia QED™ technology integrates perfectly with other Lutron lighting controls.

This tabletop master control, in a bright chrome finish, is one of many keypad options that you can choose from to control lights and shades.





# 6:55 am



Lutron brings precision control to *all* the light that surrounds you. With the touch of a button, you can raise the shades to let the sun shine in, and close them for privacy or to eliminate glare. Shades that

are hard to reach or inconvenient to move into position are a thing of the past. One button adjusts the position of many shades in perfect alignment, all stopping within  $\frac{1}{16}$ " of each other.

Bright outside glare is transformed with sheer fabrics that let you see out, while providing daytime privacy.

7:17 am



Roman shades, draperies, and roller shades in any fabric imaginable are an essential addition to increase privacy, enhance security, and protect your investments in furnishings and artwork from the harsh rays of the sun. Lutron's commitment to total lighting control is evident in a full-line of electronic window enhancements that are acclaimed for their technology and silent operation.

You can choose from dozens of control styles and finishes. Here, we feature an elegant 3-button Signature Series™ keypad in a satin nickel finish.



Protect your furnishings, your art...and your privacy.



With Sivoia QED™ you can select from shades with varying opacities: minimal to filter damaging ultra-violet rays while retaining the view; nearly opaque to add more privacy; and blackout shades to completely block outside light — perfect for home theater applications.

It's amazing what a single button can do. When you leave for a trip, the "Away" button tells the system to replay your normal routine — turning lights on and off, raising and lowering the shades, everything — as if you were still home.

You're in control while you're away...



Your safety and convenience are always important.

A keypad by your entry door can be customized to your favorite setting for coming home, going away, or any other function you want. The system can even learn your daily routine and repeat it when you're out of town. It's like you never left.

There is a style to match every decor. This 4-button Signature Series™ keypad is featured in a bright brass finish.



HomeWorks® can be a major part of your home security system. As you pull up to the house, no matter what the hour, you can rest assured. Just touch your HomeWorks car visor remote and the lights at key entry points inside the house, as well as outside each entrance, turn on brightly.

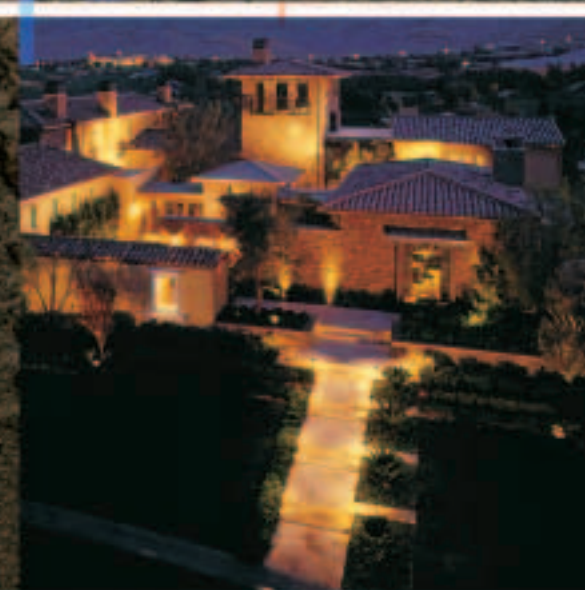
...and secure when you return.



The car visor remote will light up your home from your car.

Even in the finest neighborhoods, safety and security should never be taken lightly. The same system features that allow you to turn on selected lights upon your arrival also allow you to turn on every light in the house in an emergency, making it easier for authorities to find your location.

A HomeWorks lighting control system ensures that you will always have a warm welcome home.





The kitchen is a place to create. Every light plays a role in the performance — for preparing, cooking, and dining.



6:51 pm

Flexibility is the operative word in today's functional home, and lighting control plays a major role. In the kitchen, for example, light levels can be task-specific for preparing food, cooking, entertaining, even showcasing your masterpiece soufflé.



6:51 pm



## Function and flexibility in every room.

Any mood, any task, for any lifestyle. Lighting control adds the level of sophistication and elegant simplicity that you require.



### Lutron, once again, gives you total *customized* control.

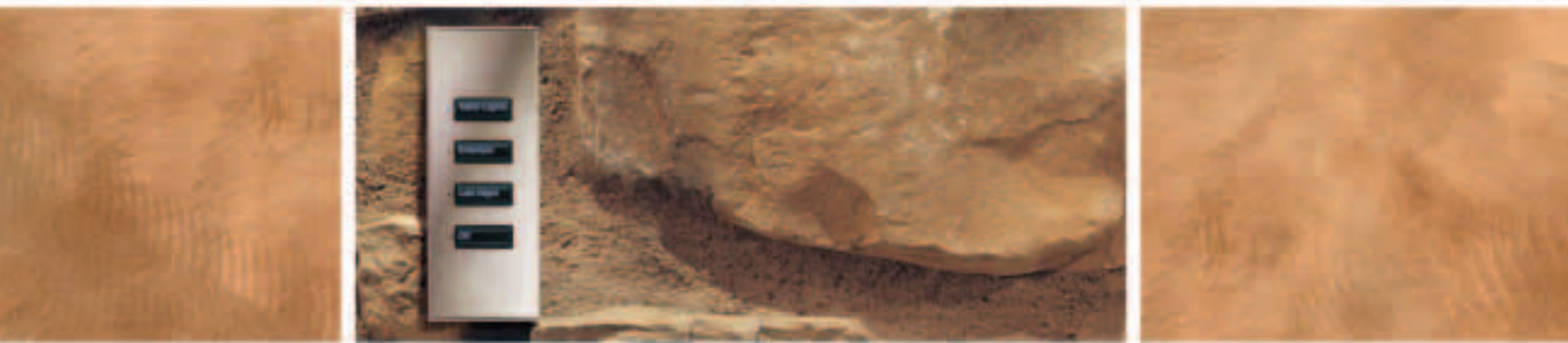
Once you've selected the light levels that meet your personal requirements, the HomeWorks® system remembers your settings. Lutron can provide custom-engraved buttons for both in-wall keypads and our popular tabletop keypads. To add the perfect designer touch to any room, our controls are available in a variety of colors, textures, and metal finishes.

In your home, you can use in-wall master keypads, portable tabletop keypads, or both.



Every room has a different function — or many different functions. Whether you're controlling the lights in the fitness center or the wine cellar, the clean elegant lines of HomeWorks® keypads reduce the wall clutter you get with so many switches.

7:49 pm





Add elegance, style, and simplicity.



**It's all in the presentation.**

When your guests arrive and it's time to select the wine for the evening, lighting controls will help to ensure that the presentation is every bit as exciting as the wine selection.

With HomeWorks®, one button is all it takes for a dramatic entrance. When entering the wine cellar, the lights gradually raise over three seconds — about the time it takes to push open the iron doors.

A Signature Series™ keypad illuminates in cool, blue text. This is a 4-button Monaco™, in satin nickel.











8:00 pm  
8:00 pm



Sometimes, half the fun is just seeing the reaction from your guests when they enter the room. Little surprises in a room can make a big impact and put the finishing touches on a beautiful piece of art, furniture, or a grand unveiling. It's all brilliantly functional...and wonderful theater, too.



No one can dispute the practicality of a HomeWorks® system, but don't forget the fun.

As every film buff knows, the movie can't begin until the lights start to dim.

9:15 pm



Entertain with style.



Because HomeWorks is engineered to seamlessly interface with all your systems, one button can dim the lights, adjust the shades, and lower the projection screen. And if you use the Sivoia QED™ system for your shades and projection screen, you can be

certain that they will operate in virtual silence without interrupting your preshow music. After the fun, and the last of the guests have left, take time to relax...

10:01 pm



Even as you relax in the spa,



A nighttime photograph of an outdoor pool area. A large palm tree stands in the foreground, its trunk illuminated from below. In the background, a two-story stone building with a tiled roof has several windows lit up. A stone wall runs across the middle ground, with a lounge chair and table set up in front of it. The pool water is illuminated with a bright blue light. The sky is a deep blue, and the overall scene is lit with warm, ambient lighting.

10:01 pm

every light is at your command.

There's always a light left on somewhere in the house, but even from your chair, in the middle of a good novel, you can put it to sleep.

It's been a long day and dinner was a great success. After relaxing in the spa, you're finally ready to settle back and read the end of the spy novel you started weeks ago.

You could always trudge around the house turning off interior lights and turning on exterior lights, but in the late hours of the night, it's just too much to ask. It's nice to know that you have complete control, again,

Rest assured.



11:32 pm



from wherever you are. Not only can you adjust the lights that surround you, but also the lights half way across the house. For added peace of mind, HomeWorks also integrates seamlessly with your security system to light emergency pathways or to flood the house with light.

Total home lighting control from Lutron is all about the quality of light — the quality of life.

Tomorrow's another day.



11:32 pm



The Lutron difference | engineering | quality | service | 24/7

#### **40 years of innovation**

Lutron invented the solid-state dimmer over 40 years ago, and since then we have developed a peerless reputation for quality and service. Lutron holds over 250 patents, 28 of which are for HomeWorks alone.

We are proud to be the provider of lighting controls for the White House, the Statue of Liberty, the Guggenheim Museum in Spain, Louis Vuitton Stores, and many other world renowned locations.



#### **"No Limits" control**

From a condo, to a villa, to a luxury home, the modular architecture of HomeWorks accommodates the specific needs of any installation. The system can provide control of up to an incredible 4,096 zones (circuits) of light and up to 1,536 keypads.

The magnificent Bank of China headquarters in Beijing, at 3,300 zones of light, is controlled by a HomeWorks system .



### **Lutron quality**

All Lutron products are designed and manufactured to the highest quality standards. Lutron was one of the first 20 companies in the U.S. to earn the ISO 9001 international quality certification. Currently 9001:2000 certified, we have the highest confidence in the quality of our products, so we back them with an 8-year limited warranty.

### **HomeServe™ technology**

No matter the age of your home, or how your home was wired at construction, wireless radio frequency (RF) HomeServe technology now allows full lighting control functionality throughout your home. Table and floor lamp dimmers, portable tabletop keypads, and car visor controls provide the ultimate home lighting solution.

### **Intelligent FM transceivers**

HomeServe uses patent-pending RF technology frequency-modulated (FM) transceivers. At system start-up, these "frequency-agile" transceivers, search for and lock into the



clearest communication channel available. The transceiver design rejects interference from noise while maximizing data rates, providing exceptional system performance.

### **Network reliability**

The HomeServe protocol employs a network of high-speed, RF signal repeaters to ensure reliable communications throughout any home. The repeater network is scalable, providing coverage up to 200,000 square feet.

### **Distributed intelligence**

Unlike some systems, HomeWorks keypads employ true 2-way communication to receive real-time, direct feedback from the lights they control. Lights receive group, not individual, communication messages and therefore react in fractions of a second.

The Lutron difference | engineering | quality | service | 24/7

#### **RTISS™**

The utility power delivered to your home is subject to voltage variations, frequency shifts, harmonics, and noise that can cause light levels to fluctuate. Lutron's patented RTISS (Real Time Illumination Stability System) filters these non-ideal conditions to keep your light levels constant.

#### **Softswitch™ technology**

When relays are closed, a heat producing arc is developed. The arc and its subsequent heating are the primary cause of wear to relay contacts, which eventually lead to relay failure. Lutron's patented Softswitch technology prevents the arc from ever forming — dramatically extending relay lifetimes — often past 1,000,000 cycles.



#### **Integral surge suppression**

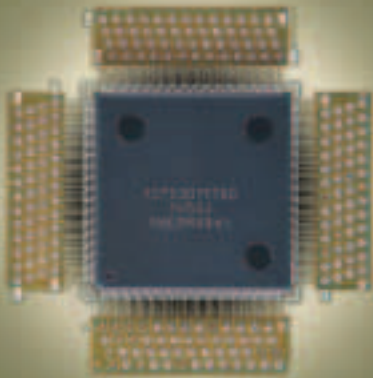
Electronic equipment can be damaged by power surges and lightning strikes. Lutron products are designed and rigorously tested to survive these extreme electrical conditions.

The question is not whether you need this level of quality, sophistication, and protection; the question is why you would accept anything less.



### **Revolutionary shading technology**

Your shading systems (roller shades, draperies, and Roman Shades) should be seen and not heard. Sivoia QED quiet electronic drive systems are rated at an incredibly low, 44 dBA sound level at a distance of 3 feet. That's about the same ambient noise level of a quiet bedroom in your home. Precision mechanisms and state-of-the-art electronics result in shade positioning accurate to  $\frac{1}{16}$ ".



### **24-hour / 7-day Technical Hotline**

Technical specialists are just a toll-free phone call away to answer any question you may have about your HomeWorks system. Simply call 800.523.9466 (in the U.S. and Canada). Worldwide technical assistance is also available in 140 languages, at 1.610.282.3800.

### **Environmentally friendly**

Your HomeWorks system is not only good for your lifestyle and comfort; it's good for the environment, too. By only having necessary lighting on and set to the required level, energy is conserved and the environment benefits.



**HOMEWORKS**



Lutron Electronics Co., Inc.  
7200 Suter Road  
Coopersburg, PA 18036-1299  
World Headquarters 1.610.282.3800  
Technical Support Center 1.800.523.9466  
Customer Service 1.888.LUTRON1  
**www.lutron.com**

© 06/2003 Lutron Electronics Co., Inc. | Printed in the U.S.A. | P/N 367-584

